

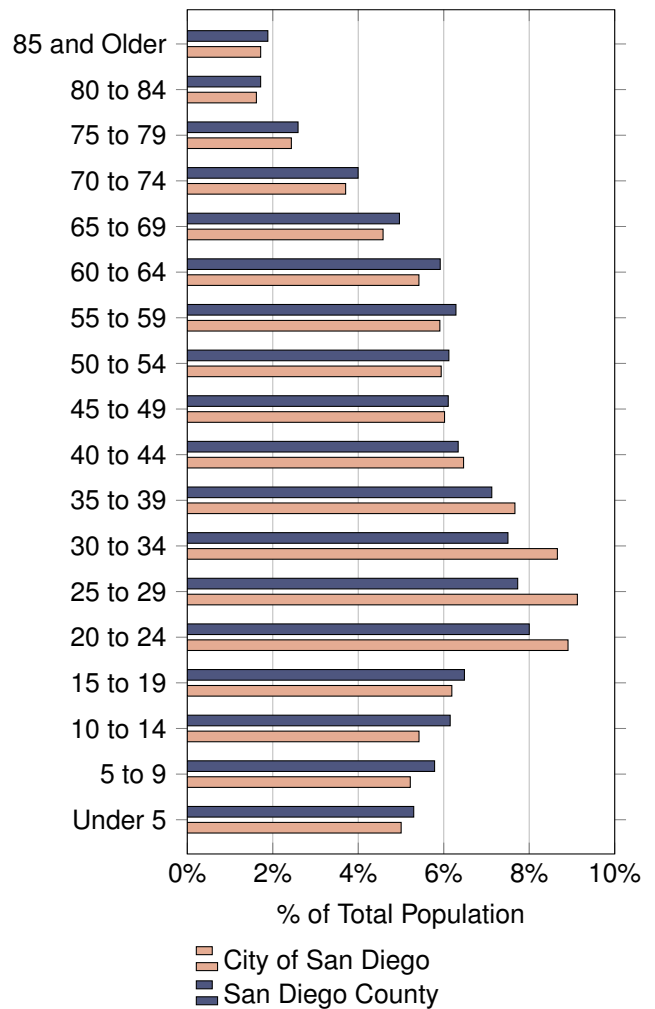
Census Demographic and Housing Characteristics

City of San Diego

April 1st, 2020

Population Type	Population	Housing Structure Type	Total Units	Households	Vacancy
Total Population	1,385,977	All Types	548,938	515,679	6.06%
Household	1,323,814				
Group Quarter	62,163				
Persons Per Household	2.57				

Age Category	Total	Male	Female
Total Population	1,386,006	693,409	692,597
4 and Under	69,351	35,290	34,061
5 to 9	72,317	37,101	35,216
10 to 14	75,144	38,483	36,661
15 to 17	45,081	23,094	21,987
18 and 19	40,708	21,403	19,305
20 to 24	123,466	64,636	58,830
25 to 29	126,498	65,294	61,204
30 to 34	120,016	61,305	58,711
35 to 39	106,247	54,540	51,707
40 to 44	89,594	44,986	44,608
45 to 49	83,423	41,340	42,083
50 to 54	82,340	40,731	41,609
55 to 59	81,904	40,961	40,943
60 and 61	31,408	15,451	15,957
62 to 64	43,709	21,124	22,585
65 to 69	63,491	30,235	33,256
70 to 74	51,350	23,466	27,884
75 to 79	33,751	15,225	18,526
80 to 84	22,411	9,535	12,876
85 and Older	23,797	9,209	14,588
Median Age	36.0	35.0	37.0



Data Source and Important Advisory:

Census Bureau data shown is derived from the 2020 Census Demographic and Housing Characteristics File (DHC) using the 2020 SANDAG Land Use and Housing Units Inventory, SANDAG’s 2020 Group Quarters Inventory, and SANDAG’s Series 15 Master Geographic Reference Areas (MGRAs) to provide data at local San Diego geographies not available directly from the Census Bureau.

The 2020 Census Demographic and Housing Characteristics File (DHC) tables used are the P12H-O, H3, P15, and P18 tables. All values displayed align with the Census Bureau at the 2020 Census Block Group level. For more information regarding the 2020 Census and the Demographic and Housing Characteristics File (DHC) please refer to the U.S. Census Bureau (<https://www.census.gov/>).

Population by Age and Race/Ethnicity

Age Category	Total	Hispanic	Non-Hispanic (NH)				
			White	Black	American Indian	Asian or Pacific Isl.	All Other*
Total Population	1,386,006	411,054	564,740	77,331	3,190	248,288	81,403
4 and Under	69,351	26,415	20,533	3,984	136	10,401	7,882
5 to 9	72,317	28,511	20,190	4,261	129	11,709	7,517
10 to 14	75,144	31,836	19,705	4,420	131	12,019	7,033
15 to 17	45,081	19,364	11,903	2,530	80	7,355	3,849
18 and 19	40,708	15,055	13,550	2,392	89	7,060	2,562
20 to 24	123,466	40,991	43,994	7,159	338	23,202	7,782
25 to 29	126,498	40,221	49,798	7,036	223	21,209	8,011
30 to 34	120,016	34,235	49,998	6,879	250	21,268	7,386
35 to 39	106,247	29,861	43,684	5,843	234	20,386	6,239
40 to 44	89,594	26,081	35,780	4,612	180	18,001	4,940
45 to 49	83,423	24,682	32,816	4,190	188	17,574	3,973
50 to 54	82,340	23,466	34,763	4,502	197	16,014	3,398
55 to 59	81,904	20,557	38,215	4,989	265	14,743	3,135
60 and 61	31,408	7,061	15,535	2,009	95	5,537	1,171
62 to 64	43,709	9,316	22,379	2,691	127	7,631	1,565
65 to 69	63,491	12,041	34,114	3,520	242	11,638	1,936
70 to 74	51,350	8,468	29,951	2,466	127	9,009	1,329
75 to 79	33,751	5,442	19,932	1,621	74	5,858	824
80 to 84	22,411	3,629	13,048	1,268	31	3,989	446
85 and Older	23,797	3,822	14,852	959	54	3,685	425
Median Age	36.0	30.5	41.3	35.0	39.7	37.4	27.5

* All Other Includes Non-Hispanic Other and Non-Hispanic Two or More Races

